



ST. MARY'S

C O L O R A D O • 1 0 , 8 0 0 F T

St. Mary's Glacier Water and Sanitation District

Committed To Providing Clean, Safe Water for All Our Residents

Kind citizens of St. Mary's Glacier.

This season we have had an unprecedented number of frozen service lines to residences. District staff is trying to ascertain whether some main lines are frozen.

We have recently learned that other communities such as Idaho Springs are having some of the same freezing issues.

What is the district doing?

The district has employed a welding service to "Hot Shot" a main line to see if it can be thawed. Currently this Hot Shot was put in place for 48 hours with no success. District staff as well as the Board of Directors are reviewing maps assembled by district staff of areas that are frozen in hope that we can ascertain where to isolate the next Hot Shot attempt.

In the interim, district staff are available to fill water tanks/ containers for residents at the new Booster Station or at the Alice Booster Station where residents can self-serve.

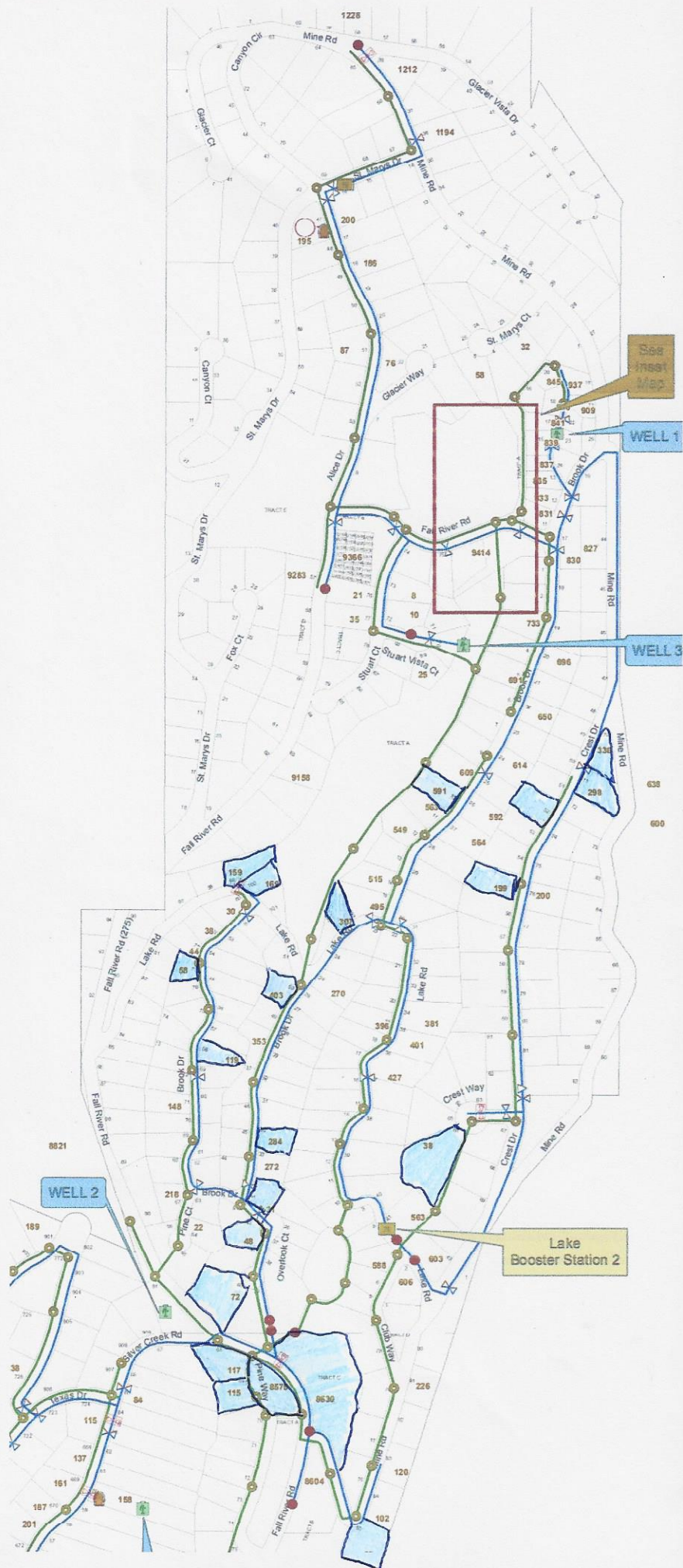
Additionally, please feel free to share your status regarding if you have water or you have recently had your line freeze. I will create a database to track this. Please share at m.carrano@yahoo.com.

Please reach out to Chris Oeland at 720-277-6585 or myself, Michael Carrano at 970-234-9761 for any assistance we can provide.

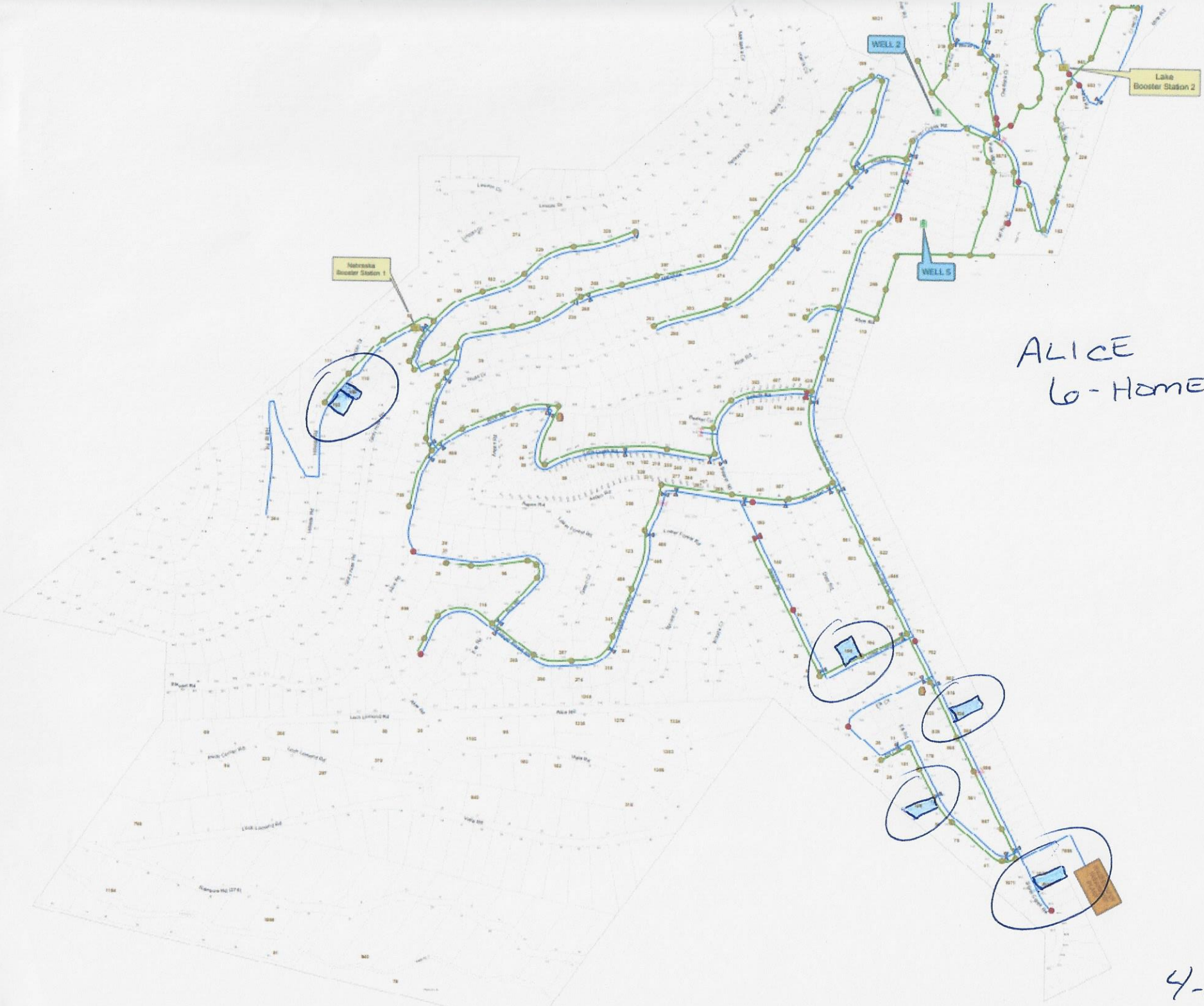
Respectfully,

Michael J. Carrano, CWP
District Manager
St. Mary's Glacier Water & Sanitation District

WINTERLAND
21-HOMES



4-3-23



ALICE
Lo-Homes

4-3-23